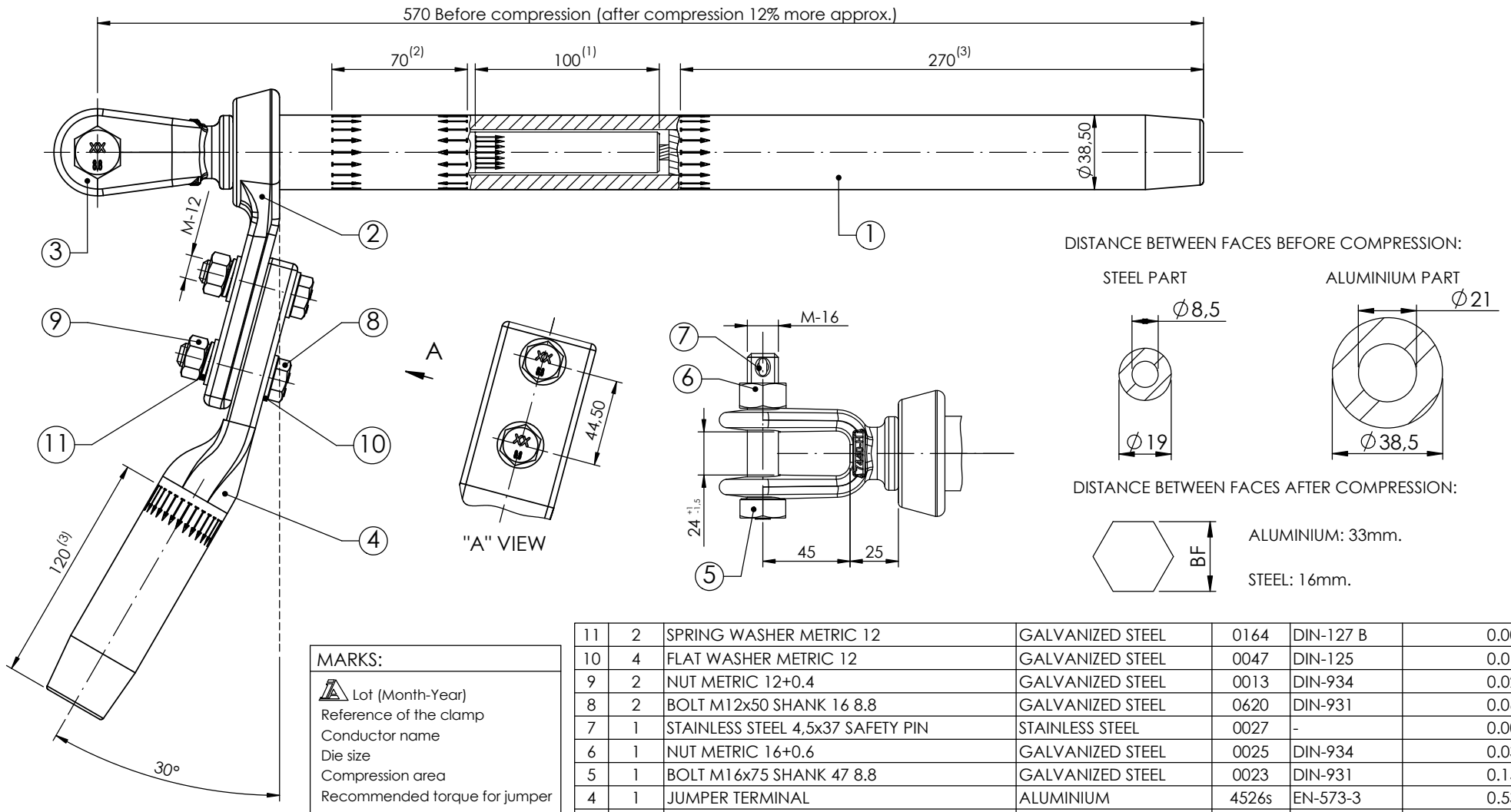


This drawing is property of I. Arruti and must not be copied, exhibited or furnished without the written consent of I. Arruti.

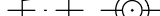


Notes:

- The pads are finished to present excellent electrical contact surfaces.
 - Electrical connection pads will be supplied with a protective covering.
 - Jumper connector dimensions according to NEMA CC 1-2009.
- (1) Compression of the steel terminal to hold the conductor core.
(2) Compression of the aluminium tube to hold the steel terminal.
(3) Compression of the aluminium tube to hold the conductor.



NAME	
DRAWN BY	E.V.
SIGNED BY	I.L.

No.	QTY.	DESCRIPTION		MATERIAL		CODE	STANDARD	WEIGHT(Kg)		
UNITS (mm.)		- Manufactured according to IEC 61284 standard				TOTAL WEIGHT: 3.24 Kg				
		- Tolerances unless otherwise stated to be:				- U.T.S.: %95 CABLE				
		Up to and including 35 mm. ±0.7 mm. Over 35 mm. ±2%				- Recommended Torque: 50 Nm.				
		- Hot dip galvanized according to ISO 1461 standard				- Coating thickness. Local: 70µm. Average: 85µm				
		04/06/2019	COMPRESSION CLAMP C-215					SCALE	DRAWING	ISSU
		04/06/2019	FOR AC 185 CONDUCTOR					1:3	5836-M	1