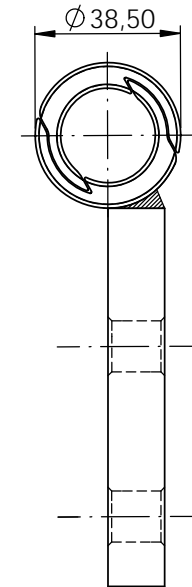
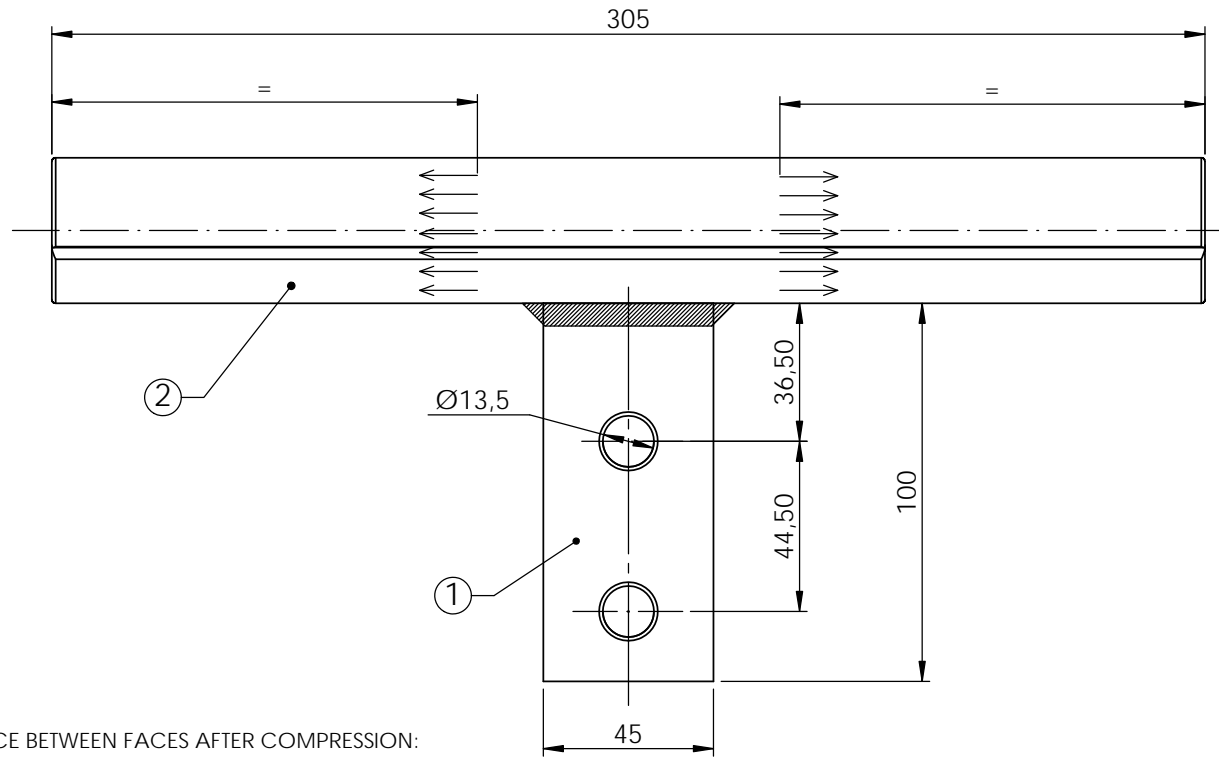
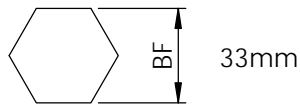

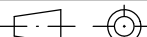


This drawing is property of I. Arruti and must not be copied, exhibited or furnished without the written consent of I. Arruti.



DISTANCE BETWEEN FACES AFTER COMPRESSION:



 INDUSTRIAS ARRUTI S.A.	2	1	REPAIR SLEEVE		ALUMINUM	12201	EN-573-3	0.53	
	1	1	JUMPER PLATE NEMA2		ALUMINUM	14146	EN-573-3	0.17	
	No.	QTY.	DESCRIPTION			MATERIAL	CODE	STANDARD	WEIGHT (Kg.)
	UNITS (mm.)		<div>- Manufactured according to IEC 61284 standard - Tolerances unless otherwise stated to be: Up to and including 35 mm. ±0.7 mm. Over 35 mm. ±2%</div>				TOTAL WEIGHT: 0,70 kg		
									
	NAME	- lcc: Depend on the connexion to the piece							
DRAWN BY	J.E.		21/07/2020	T COMPRESSION CONECTOR DR-38,5/P2			SCALE	DRAWING	ISSUE
SIGNED BY	I.L.		21/07/2020				1:2	14625-M	0

1	25/05/21	Aluminium die is yupdated.	---	J.E.
0	21/07/20	Edited in new format.	CAD software change.	J.E.
No.	DATE	MODIFICATION	REASON	MOD. BY