

| No. | DATE | MODIFICATION | REASON | MOD. BY |
|-----|----------|-----------------------|----------------------|---------|
| 0 | 30/01/12 | Edited in new format. | CAD software change. | E.V. |
| 1 | 12/03/21 | Standard updated. | --- | A.U. |

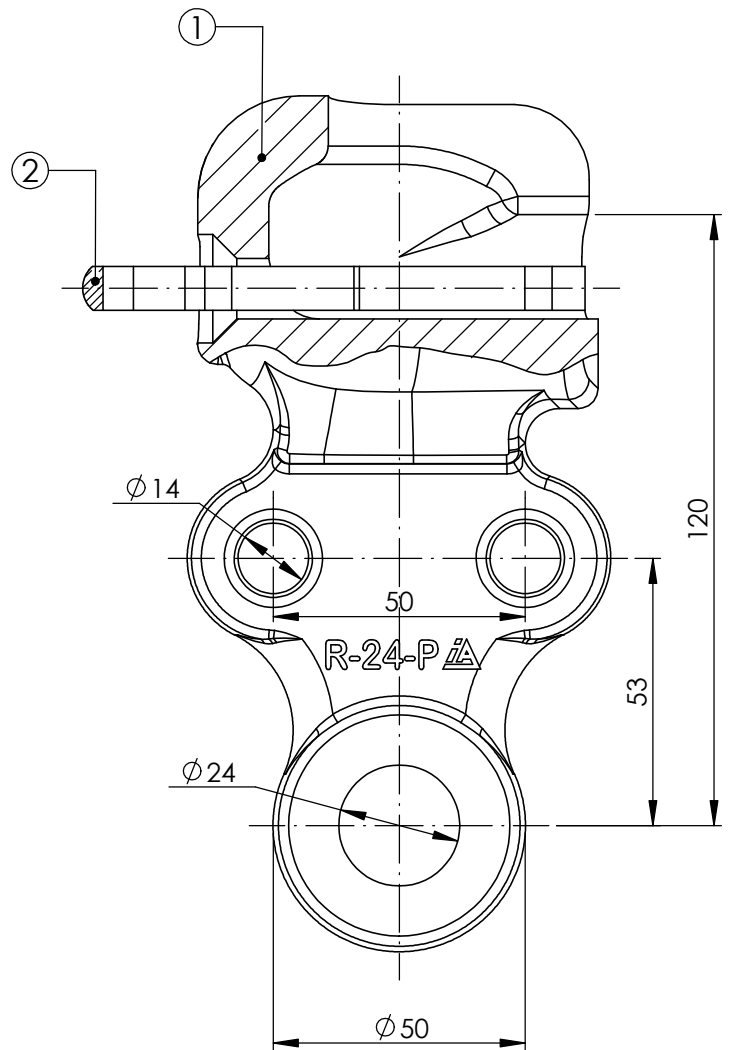
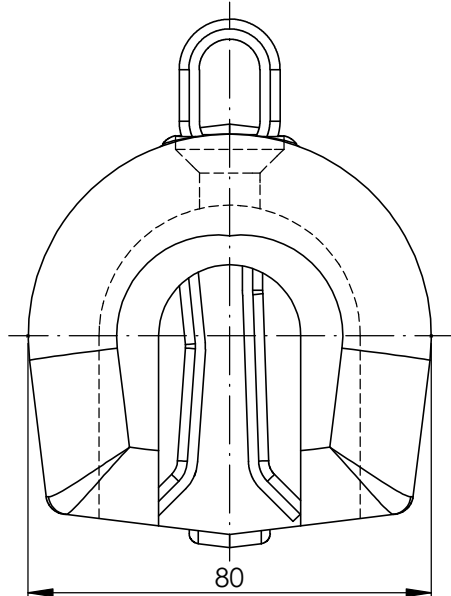
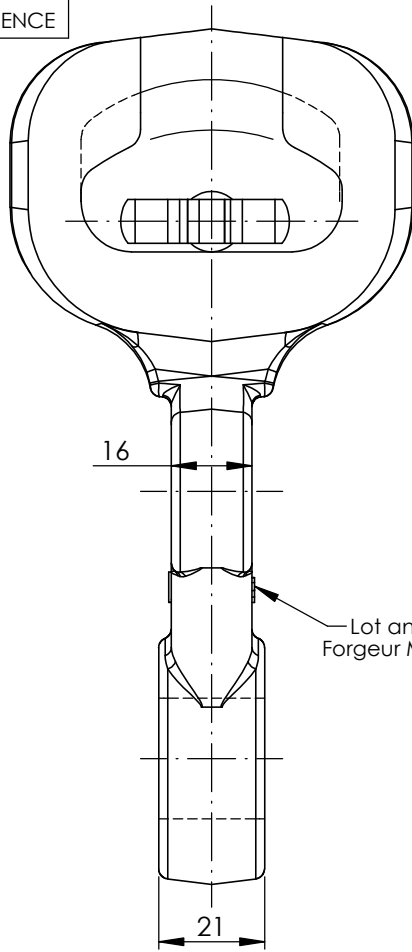
MARKINGS:

LOT (month & year)



FORGER MARK



& REFERENCE



DIMENSIONS OF SOCKET COUPLING
ACCORDING TO IEC-60120 N24 STANDARD

| | | | | | | | | | |
|--|-------------|------|---|-------------------------|------------------|--|-------------|------------------------|-------|
|  INDUSTRIAS ARRUTI S.A. | 2 | 1 | STANDARD SAFETY PIN FOR N-24 BALL SOCKET | | STAINLESS STEEL | 1490 | IEC-372 | 0.05 | |
| | 1 | 1 | SM SOCKET EYE | | GALVANIZED STEEL | 8813S | EN-10.083-2 | 2.10 | |
| | No. | QTY. | DESCRIPTION | | MATERIAL | CODE | STANDARD | WEIGHT (Kg.) | |
| | UNITS (mm.) | | - Manufactured according to IEC 61284 standard - Tolerances unless otherwise stated to be: Up to and including 35 mm. ±0.7 mm. Over 35 mm. ±2% - Hot dip galvanized according to ISO 1461 standard | | | - M.B.S.L.: 24.000 daN - M.D.S.L.: 75% M.B.S.L. - lcc: Depend of the connexion to the piece - Coating thickness. Local: 70µm. Average: 85µm | | TOTAL WEIGHT: 2.15 Kg. | |
| F40513 | NAME | |  | | | | | | |
| DRAWN BY | E.V. | | 30/01/2012 | SOCKET EYE R-24-P/21 | | | SCALE | DRAWING | ISSUE |
| SIGNED BY | I.L. | | 30/01/2012 | | | | 2:3 | 8813-M | 1 |

This drawing is property of I. Arruti and must not be copied, exhibited or furnished without the written consent of I. Arruti.