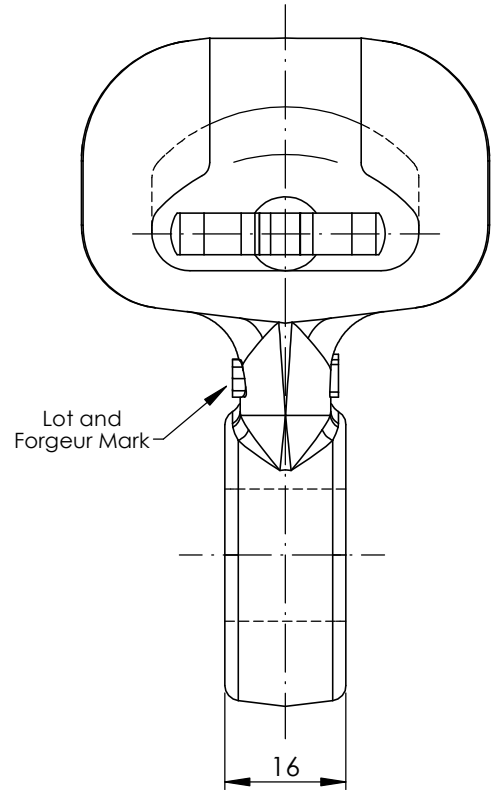
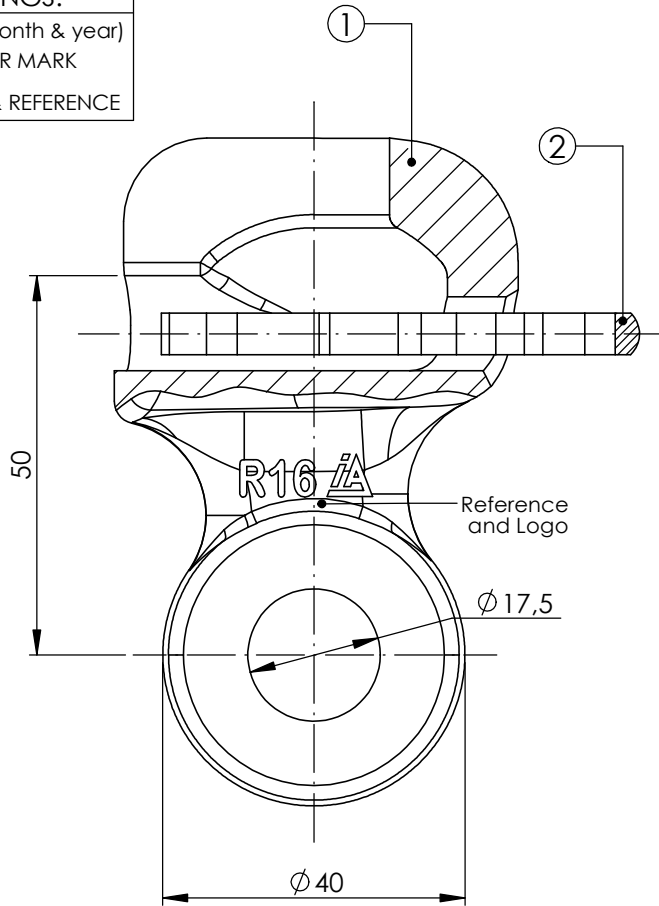
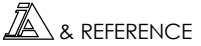


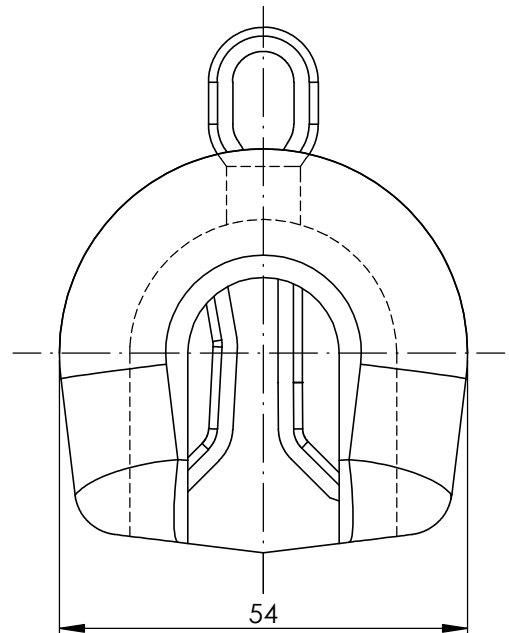
No.	DATE	MODIFICATION	REASON	MOD. BY
0	19/12/11	Edited in new format.	CAD software change.	E.V.
1	11/03/21	Updated standard	---	A.U.

# MARKINGS:


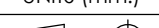
LOT (month & year)  
FORGER MARK



DIMENSIONS OF SOCKET COUPLING  
ACCORDING TO IEC-60120 N16 STANDARD



This drawing is property of I. Arruti and must not be copied, exhibited or furnished without the written consent of I. Arruti.

 INDUSTRIAS ARRUTI S.A. F40513	2	1	STANDARD SAFETY PIN FOR N-16 BALL SOCKET		STAINLESS STEEL	3196	IEC 372	0.02	
	1	1	SM SOCKET EYE		GALVANIZED STEEL	0034s	EN-10.083-2	0.52	
	No.	QTY.	DESCRIPTION		MATERIAL	CODE	STANDARD	WEIGHT (Kg.)	
	UNITS (mm.)		- Manufactured according to IEC 61284 standard - Tolerances unless otherwise stated to be: Up to and including 35 mm. ±0.7 mm. Over 35 mm. ±2% - Hot dip galvanized according to ISO 1461 standard			- M.B.S.L.: 12.500 daN - M.D.S.L.: 75% M.B.S.L. - lcc: Depend of the connexion to the piece - Coating thickness. Local: 70µm. Average: 85µm		TOTAL WEIGHT: 0.53 Kg.	
									
DRAWN BY	E.V.		19/12/2011	SOCKET EYE R-16			SCALE	DRAWING	ISSUE
SIGNED BY	I.L.		19/12/2011				1:1	0033-M	5