
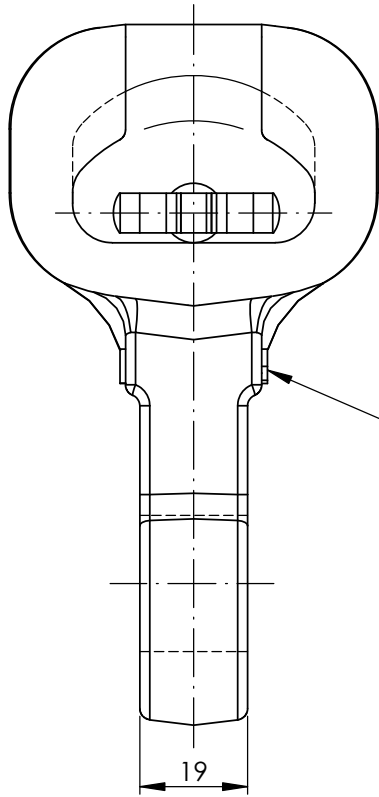


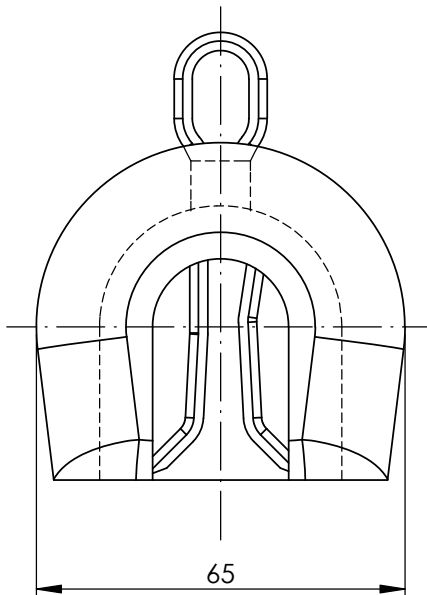
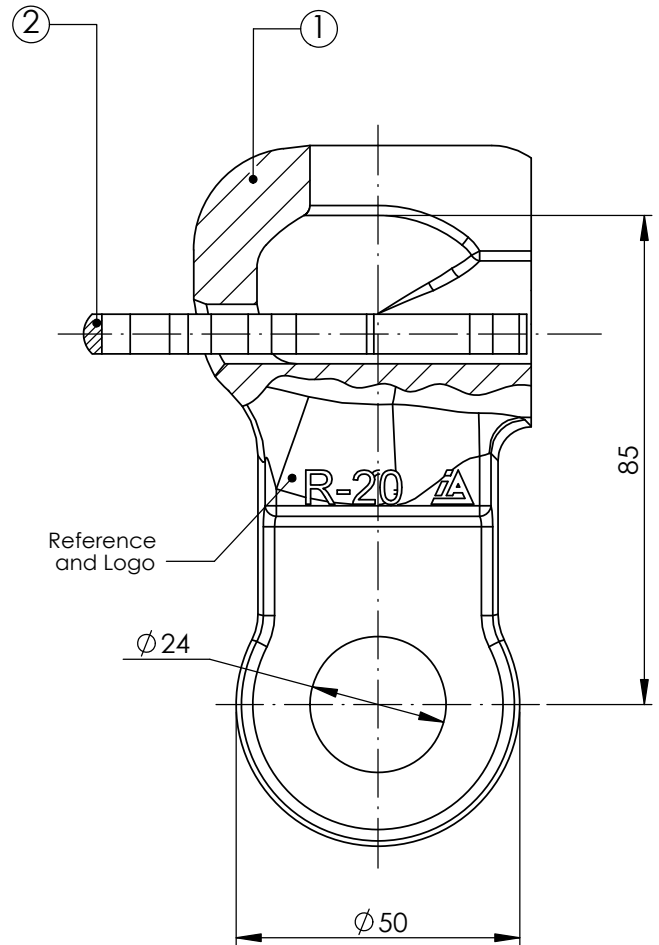
No.	DATE	MODIFICATION	REASON	MOD. BY
0	13/01/12	Edited in new format.	CAD software change.	E.V.
1	09/07/18	Marking place is updated.	New marking place.	J.E.

# MARKINGS:

LOT (month & year)  
FORGER MARK  
 & REFERENCE


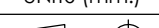


Lot and  
Forgeur Mark



DIMENSIONS OF SOCKET COUPLING  
ACCORDING TO IEC-120/20 STANDARD

This drawing is property of I. Arruti and must not be copied, exhibited or furnished without the written consent of I. Arruti.

 INDUSTRIAS ARRUTI S.A.	2	1	STANDARD SAFETY PIN FOR N-20 BALL SOCKET		STAINLESS STEEL	0125	IEC-372	0.03	
	1	1	SM SOCKET EYE		GALVANIZED STEEL	5411	EN-10.083-2	1.11	
	No.	QTY.	DESCRIPTION		MATERIAL	CODE	STANDARD	WEIGHT (Kg.)	
	UNITS (mm.)		- Manufactured according to IEC 61284 standard - Tolerances unless otherwise stated to be: Up to and including 35 mm. ±0.7 mm. Over 35 mm. ±2% - Hot dip galvanized according to ISO 1461 standard			- M.B.S.L.: 18.000 daN - M.D.S.L.: 75% M.B.S.L. - lcc: Depend of the connexion to the piece - Coating thickness. Local: 70µm. Average: 85µm		TOTAL WEIGHT: 1.13 Kg.	
F40513	NAME								
DRAWN BY	E.V.		13/01/2012	SOCKET EYE R-20/Ø24 (BS-150)			SCALE	DRAWING	ISSUE
SIGNED BY	I.L.		13/01/2012				3:4	5412-M	2