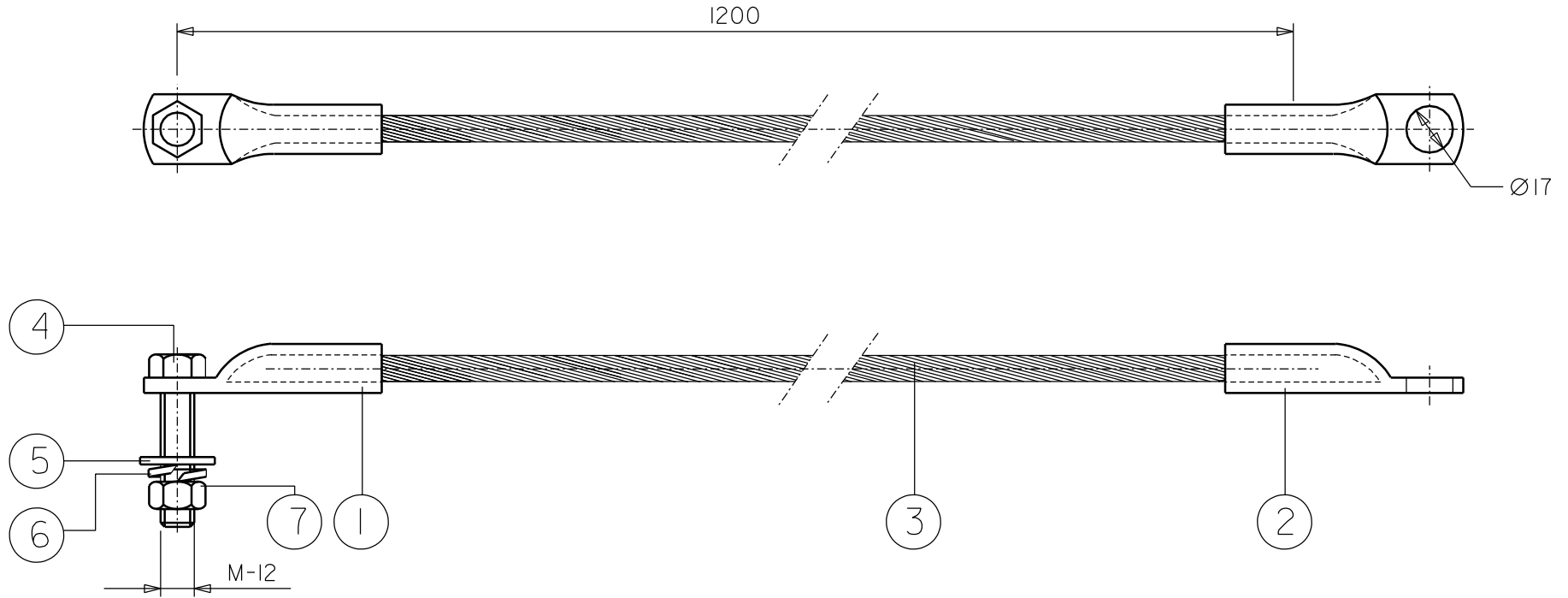


This drawing is property of I. Arruti and must not be copied, exhibited or furnished without the written consent of I. Arruti



Tolerances unless otherwise stated to be up to and including 35 mm. ± 0.7 mm. Over 35 mm. $\pm 2\%$
Hot dip galvanized according to ISO 1461

7	1	HEX NUT M-12	STEEL INOXIDABLE
6	1	GROWER WASHER M-12	STEEL GALVANIZED
5	1	PLAIN WASHER M-12	STEEL INOXIDABLE
4	1	BOLT M-12x50 DIN 933 8.8	STEEL GALVANIZED
3	1	EARTH CABLE L-110	STEEL GALVANIZED
2	1	TERMINAL AT-120/Ø17	STEEL GALVANIZED
1	1	TERMINAL AT-120	STEEL GALVANIZED
N	QTY	DENOMINATION	MATERIAL

MOD.	DATE	MODIFICATION	DRAWN BY		
CODE					
GROUND CONNECTOR					
CC2TT-120x1200/M16/M12 (WITH M12 BOLT)					
 INDUSTRIAS ARRUTI S.A.		UNIT (mm.)	Weight: 0,45 Kg.		
F40513	NAME	6-II-13	SCALE	DWG No	ISSUE
DRAWN	I.L.	6-II-13	D/S	7583-M	0
CHECKED	I.L.				